

# Financial Results for FY2022 2Q

(Jan. 2022 – Jun. 2022)

Nisshinbo Holdings Inc.  
Aug. 10, 2022

1. FY2022 2Q Results Overview P.3
2. Forecast for FY2022 and topics P.10
3. Business strategies of Micro devices P.14
4. Appendix P.34

The earnings forecasts contained in these materials are based on information currently available to the Company and are not promises of achievement.

# 1. FY2022 2Q Results Overview

# 1-1. Financial Highlights (y/y)

(mil. yen)

	FY2021 2Q	FY2021 2Q reclassified(※)	FY2022 2Q	Change	
					rate
Net sales	264,128	248,808	256,865	+8,056	+3.2%
Operating income	19,416	18,464	12,962	-5,501	▲29.8%
Ordinary income	22,564	21,900	17,682	-4,217	▲19.3%
Net income Attributable to Owners of Parent	17,098	16,633	13,196	-3,436	▲20.7%

Nisshinbo Group has applied the accounting standard for revenue recognition and other standards from 1Q 2022. Therefore, year-on-year comparative information excluding the impact of the accounting standard change on business results is provided for reference.

**Sales increased due to strong sales of microdevices and other products.**

**Although operating income increased significantly in microdevices, operating income decreased on a consolidated basis due to the impact of soaring raw material and energy prices in the brake business and other businesses.**

- Net sales            **Increased (+)** Micro Devices, Brakes, Textiles
- Operating income **Decreased (+)** Micro Devices (-) Wireless Comms, Brakes
- Ordinary income   **Decreased (-)** Operating Income decreased
- Net income         **Decreased (-)** Ordinary Income decreased

# 1-2. FY2022 2Q Net sales (y/y)

(mil. yen)

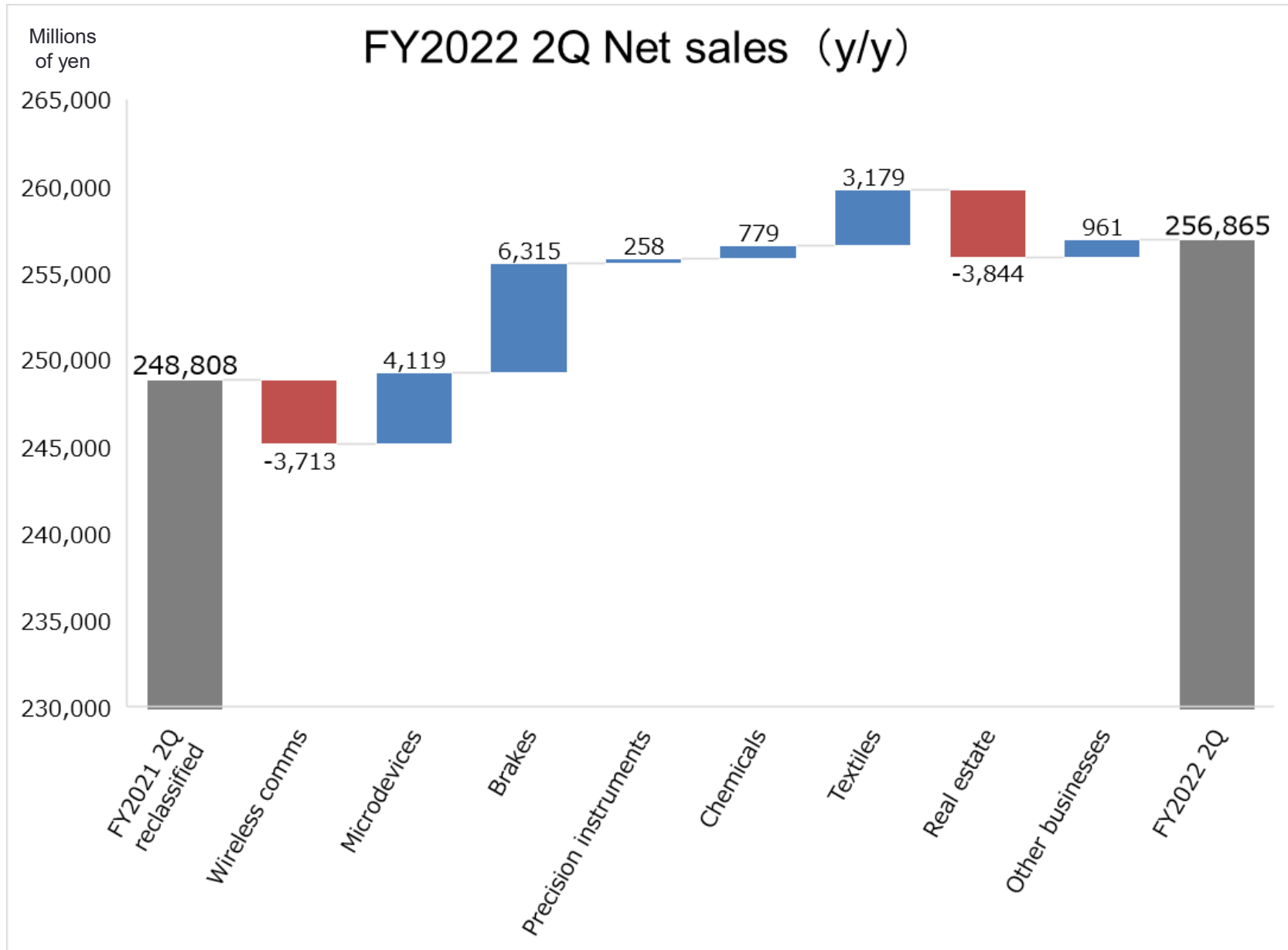
	FY2021 2Q reclassified	FY2022 2Q	Change	
				rate
Wireless comms	81,200	77,487	-3,713	▲4.6%
Microdevices	36,951	41,071	+4,119	+11.1%
Brakes	69,210	75,525	+6,315	+9.1%
Precision instruments	24,198	24,457	+258	+1.1%
Chemicals	5,286	6,065	+779	+14.7%
Textiles	14,971	18,150	+3,179	+21.2%
Real estate	12,566	8,721	-3,844	▲30.6%
Others	4,423	5,384	+961	+21.7%
<b>Total</b>	<b>248,808</b>	<b>256,865</b>	<b>+8,056</b>	<b>+3.2%</b>

## (y/y) Increased

**[Micro Devices]** Sales for consumer products slowed, but increased due to strong sales in automotive and industrial equipment applications.

**[Brakes]** Sales increased due to strong shipments of copper-free friction materials, despite the impact of production cutbacks by car manufacturers.

# 1-2. FY2022 2Q Net sales (y/y)



# 1-3. FY2022 2Q Operating income (y/y)

(mil. yen)

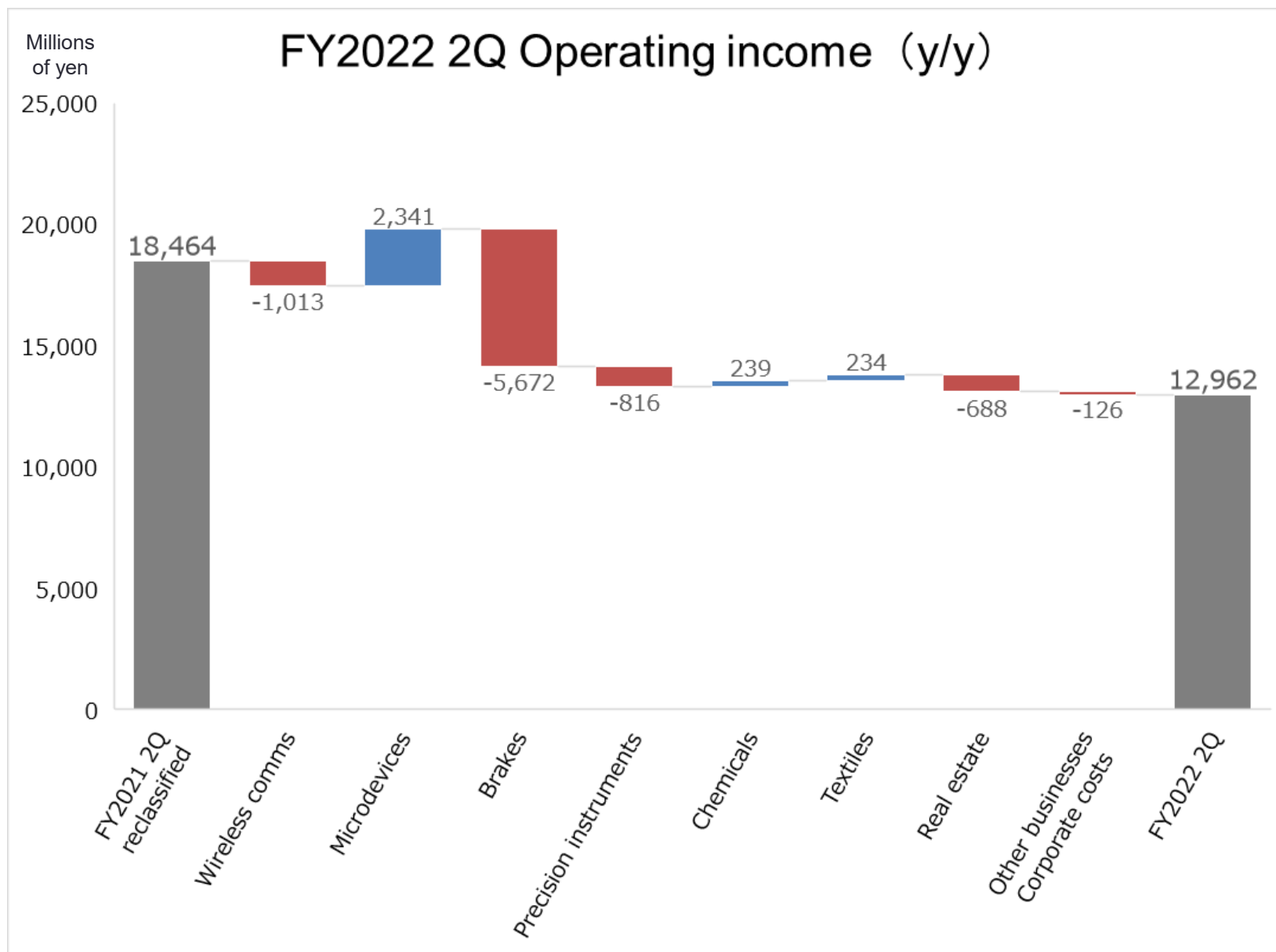
	FY2021	FY2022	Change	
	2Q reclassified	2Q		rate
Wireless comms	6,034	5,021	-1,013	▲ 16.8%
Microdevices	2,240	4,582	+2,341	+104.5%
Brakes	3,506	-2,165	-5,672	-
Precision instruments	739	-76	-816	-
Chemicals	923	1,163	+239	+26.0%
Textiles	-541	-307	+234	-
Real estate	7,966	7,277	-688	▲ 8.6%
Others & Corporate cost	-2,404	-2,531	-126	-
<b>Total</b>	<b>18,464</b>	<b>12,962</b>	<b>-5,501</b>	<b>▲ 29.8%</b>

## (y/y) Decreased

[Wireless comms] Although sales of disaster prevention administrative radio systems increased in the solutions business, income decreased due to a decline in large projects for road information systems.

[Brakes] TMD, which is mainly engaged in the after-market business, is actively promoting price pass-on, but profit declined because it could not keep up with the sharp rise in raw material and energy prices.

# 1-3. FY2022 2Q Operating income (y/y)





# 1-4. Ordinary income to net income (y/y)

(mil. yen)

	FY2021 2Q	FY2022 2Q	Change	
				rate
Operating income	19,416	12,962	-6,454	▲33.2%
Non-operating income	4,606	6,548	+1,942	+42.2%
Non-operating expenses	1,458	1,829	+371	+25.4%
Ordinary income	22,564	17,682	-4,882	▲21.6%
Extraordinary income	2,287	1,587	-700	▲30.6%
Extraordinary loss	1,763	884	-879	▲49.9%
Income before income taxes	23,088	18,385	-4,703	▲20.4%
Income taxes	5,246	4,938	-308	▲5.9%
Profit attributable to non-controlling interests	744	250	-494	▲66.4%
Profit attributable to owners of parent	17,098	13,196	-3,902	▲22.8%

**(y/y) Decreased**

**Net income attributable to owners of the parent : Decreased mainly due to lower operating income**

## 2. Forecast for FY2022

## 2-1. Forecast for FY2022

(mil. yen)

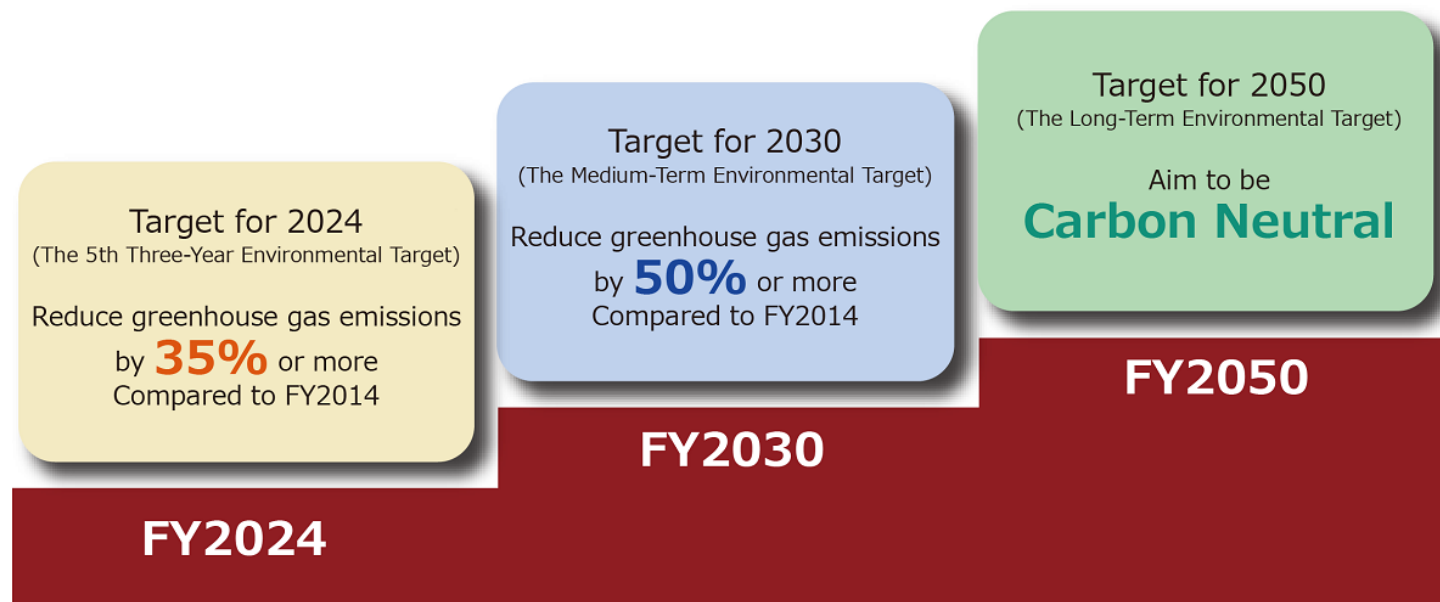
	FY2022 2Q	FY2022 Initial FC Feb. 9	Rate of progress
Net sales	256,865	513,000	50.1%
Operating income	12,962	23,000	56.4%
Ordinary income	17,682	26,000	68.0%
Net income Attributable to Owners of Parent	13,196	17,000	77.6%

**• No change from the initial forecast announced on February 9, 2012.**

**• Although each segment's progress differs, consolidated performance remained steady.**

# ① Declaration of Carbon Neutrality

Based on the results of a climate change scenario analysis in accordance with the TCFD recommendations, Nisshinbo Holdings announced an environmental goal of reducing the Group's greenhouse gas emissions by 50% or more by 2030. At the same time, the company expressed its support for the TCFD recommendations and declared its intention to be carbon neutral by 2050.

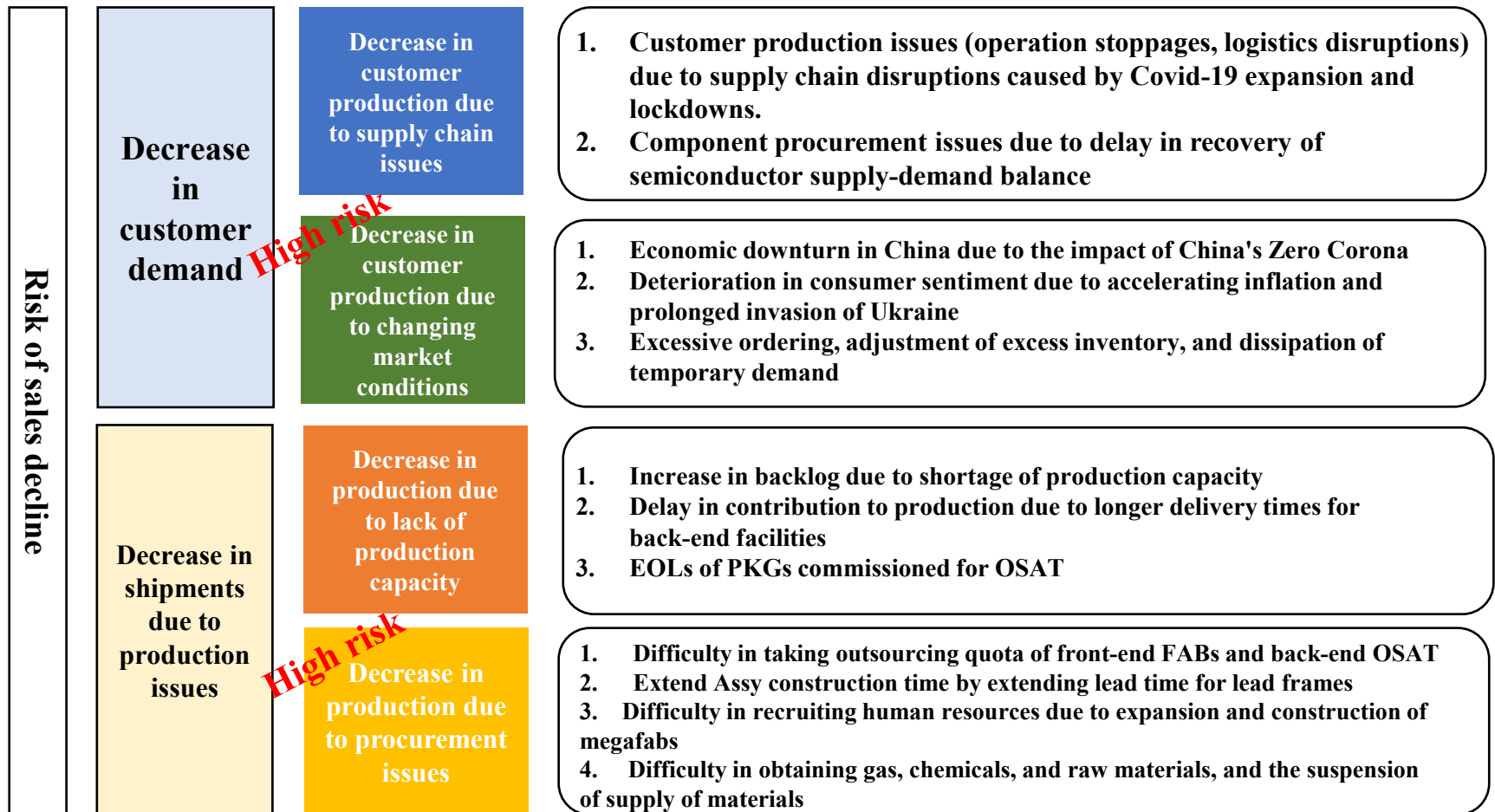


### ② Construction of a new plant for fuel cell bipolar plates

Orders are expected to exceed the production capacity of existing plants by 2023. To catch up and further expand its business, the company will increase production and strengthen its competitiveness by expanding its plant, installing a new line, and increasing the capacity of the existing plant. The investment will be approximately 10 billion yen, and the new plant is scheduled to be completed at the end of 2024.



### 3. Business strategies of Micro Devices



■ The tide is turning noticeably in the consumer products sector, and the risk of customer production declines due to changes in market conditions is increasing. The shortage of production capacity will be resolved due to the decrease in demand, but the risk of difficulty in obtaining parts and materials will continue.

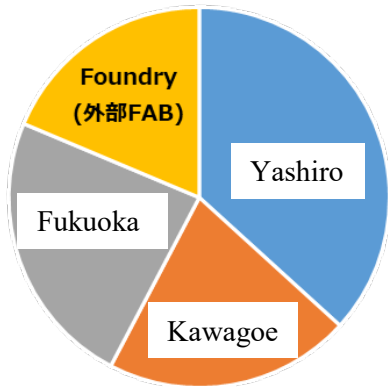
# Electronic Devices Business Situation

Market	Area	Business situation
Consumer	Domestic	Although the market has seen an increase in the number of requests from customers to delay deliveries due to excess inventory of parts, we expect sales in 2023 to remain at about the same level as in 2022, based on our long track record of deliveries to customers in a wide range of applications.
	Overseas	Smartphones are sluggish, particularly in China, and are expected to recover in 2023. Demand for remote work in Note PC and high-end audio systems was sluggish, and is expected to remain sluggish and stable in the future. Sales of air conditioners (impact of lock-down) in China and VR (formation of new markets) in the U.S. were favorable.
Industrial machinery	Domestic	The condition of high demand continues. Steady growth is expected to continue, mainly in the factory automation equipment market.
	Overseas	It is trending steadily, mainly in FA. Production of UPS and solar in China is steadily expanding. The cloud, electronic money servers, and power tools have been adjusted, but a recovery is expected in 2023.
Automotive	Domestic	Demand from automotive Tier customers remains robust, despite production cutbacks by automobile manufacturers. Steady growth is expected, mainly in applications for the xEV market, which is expected to grow significantly in the future.
	Overseas	Market is rapidly expanding as China is subsidizing EV-related to post-lock-down stimulus measures. Sales of batteries, motors, and camera modules are expected to grow. In other regions as well, automobiles in general, particularly EV, are trending steadily.



# Production Status of Electronic Devices (Front-end process) **NISSHINBO**

Ratio of production volume in FY2022 (8-inch equivalent)



## Yashiro 6-inch

• Full capacity production is ongoing.

## Yashiro 8-inch

• Increase facilities and personnel to cope with the increase in production volume.

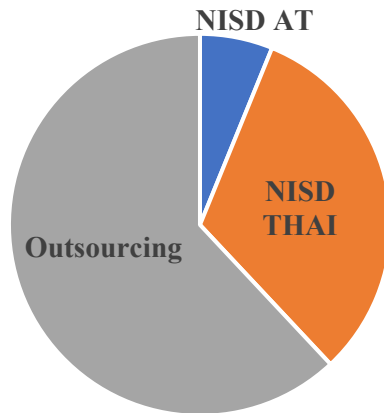
## Foundry

• Foundry's production volume increased significantly as the market expanded.



# Production Status of Electronic Devices (Back-end process) **NISSHINOBO**

**Ratio of production volume in FY2022**



## NISD AT

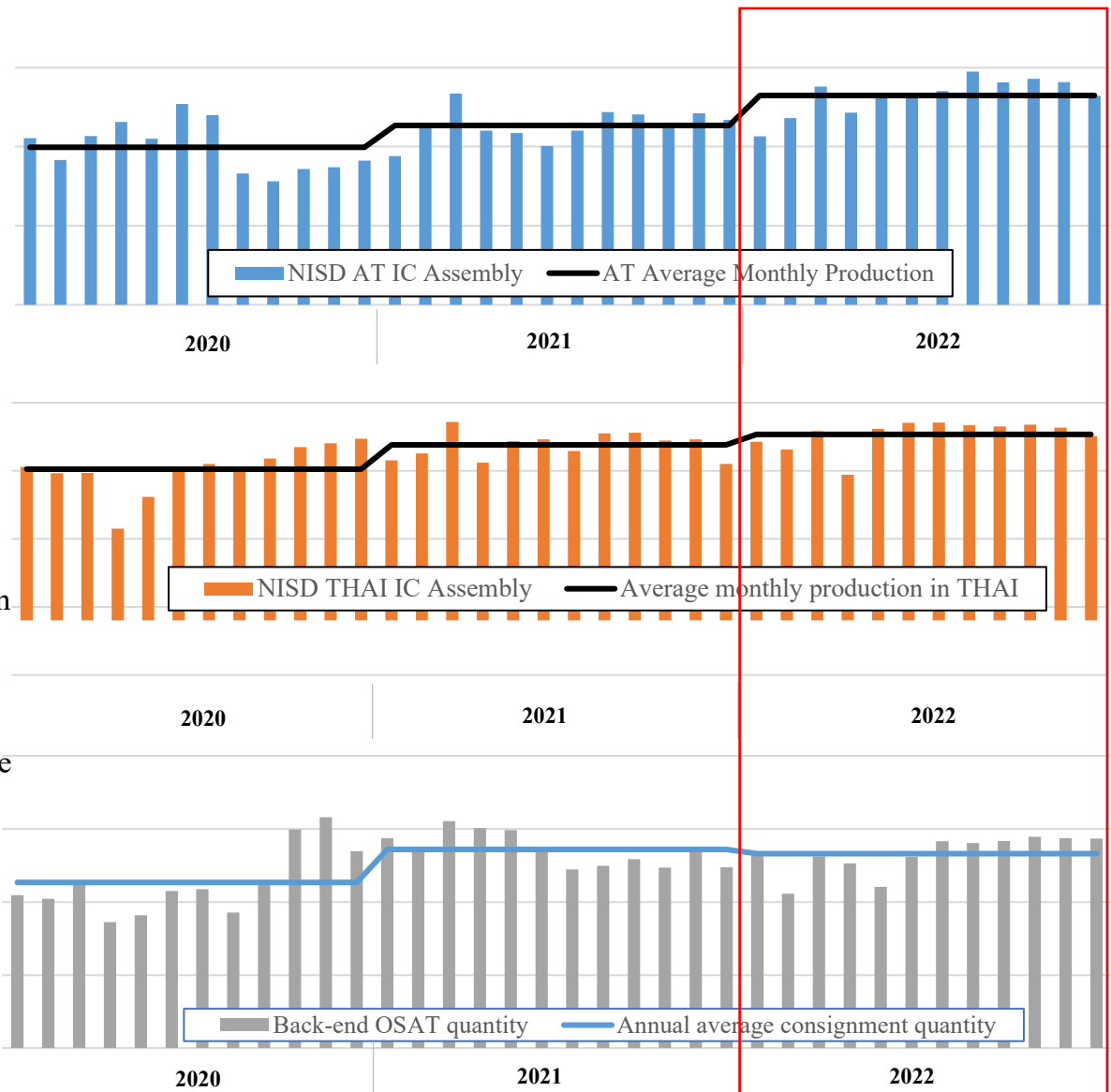
• Line reinforcement contributes to elimination of order backlog in the second half.

## NISD THAI

• Though material availability is difficult in the first half, it improves in the second half and is operating at full capacity.

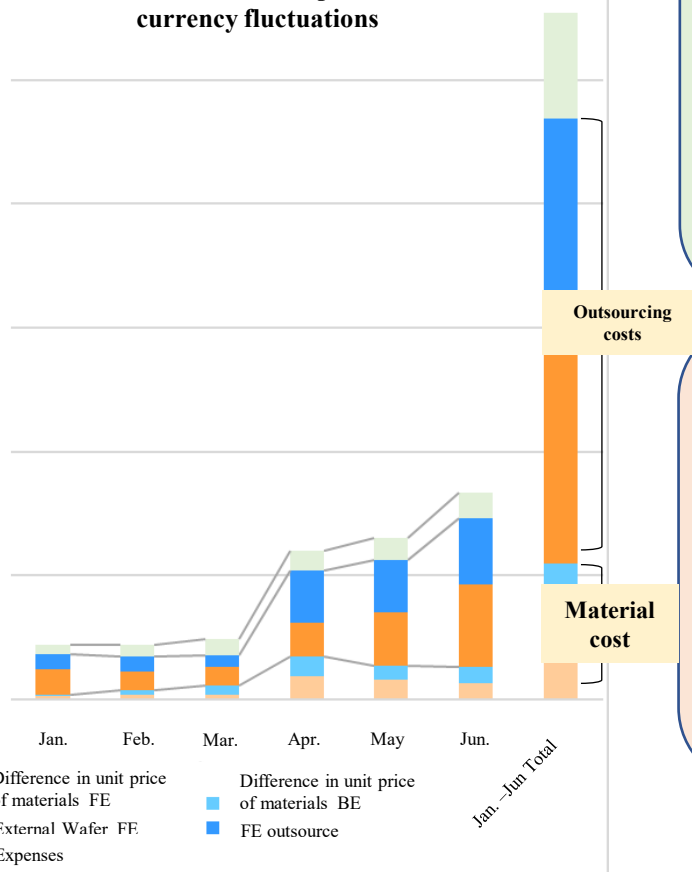
## OSAT

• Foundry's production volume increased significantly as the market expanded.



## Impact of price hikes related to production

※Without the impact of currency fluctuations



### <Front-end process>

#### ● Continued hikes in silicon wafers and chemicals, and outsourced FAB costs

Continued price hikes due to strong demand for electronic components, rising transportation costs, and lower supplies of raw materials due to geopolitical risks.

#### ● Securing outsourced FAB quota

Shortage of inputs quota for each foundry continues.

### <Back-end process>

#### ● Continued hikes in lead frame and gold wire prices and outsourcing costs

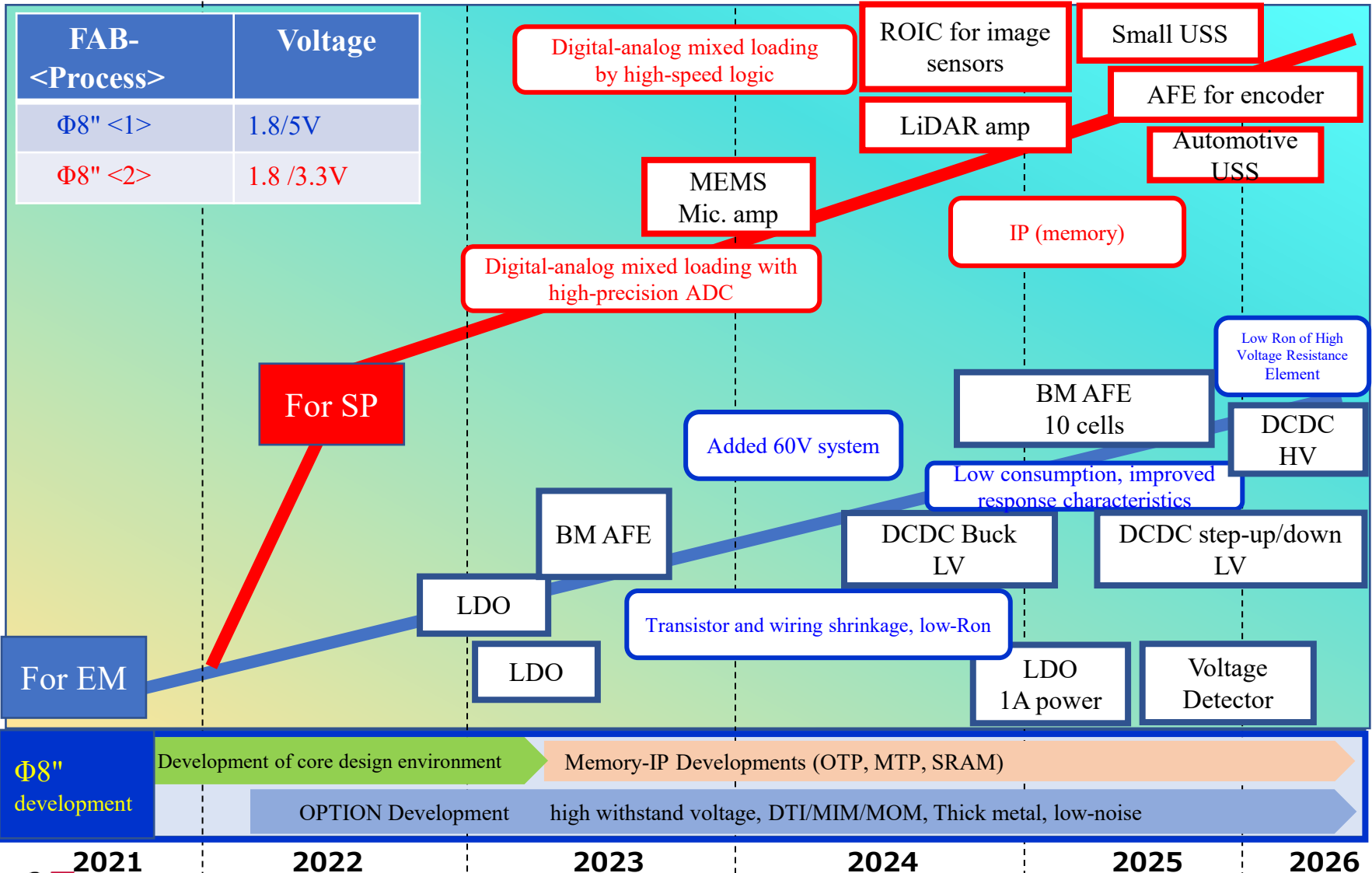
Strong demand for electronic components and the impact of price hikes due to higher metal prices caused by geopolitical risks.

#### ● Longer construction periods for production components (lead frames, substrates, etc.)

Especially overseas, the maximum delivery time of 50 weeks is still continuing. We are reducing the impact of production by making arrangements in advance.

**Responding by quickly arranging and acquiring necessary items to keep the production line in operation.**

# Development Status of Yashiro 0.18μm



## Three SINKAs

### Deepening

#### 1) Strengthen standard products business

• The strengths of both companies (low consumption, low noise, high precision) will be further strengthened and widely deployed as a base business in the consumer, industrial, and in-vehicle markets.

### Evolution

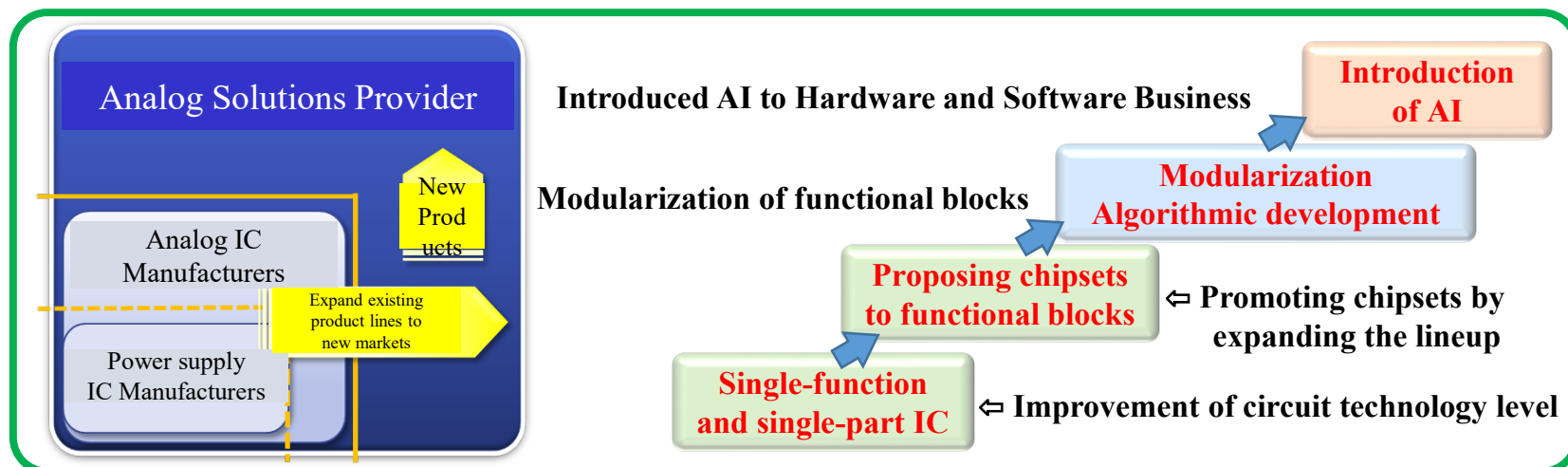
#### 2) Development of signal processing business

• Combining the following strengths around sensors, which will grow in the future, we will develop businesses such as sensor AFE, mainly for automotive and industrial equipment.

### Renewal

#### 3) Transformation into an analog solutions provider

• Deployment of sensing devices (modules)  
 • Incorporate control logic (DSP, microcontrollers), short-distance communication technology to further increase the value provided to customers in terms of both hardware and software.



## Providing Customer-Oriented Solutions

### -Expanding from the Component Business to the System Level

Ultra-sonic sensor  
Microwave sensor  
Optical sensor  
Gas sensor  
Microphones  
Strain sensor

**Strengthening  
Sensor  
Technologies**  
Coordination of related  
themes

Modular technology capabilities  
Software development capabilities  
Use scene imagination  
...

**Strengthening Signal  
Processing  
Technologies**  
Including collaboration  
with 

## Digital Innovation-Creating Data Businesses by Promoting AI and IoT

Analyze the collected data, transform it into valuable data for the user, and provide it.

for data contributing to society



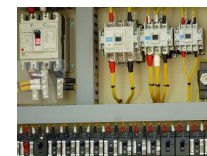
Healthcare; Prevention of medical lifestyle-related diseases; Presence of diseases



Households and on-board Office air management



Agriculture and livestock industries  
Soil management and odor countermeasures



Switchboard  
Odor abnormality detection

# Promoting Group Contribution Businesses

## Expansion of new businesses and the launch of new products

Under development of new products through technology integration in collaboration with Nisshinbo Group companies



# APPENDIX



## Significance of integration:

Mainly in the electronic devices business, by leveraging the strengths of both companies to expand our strong product portfolio, Nisshinbo Micro Devices will become an analog solutions provider expected from customers around the world.

## ■ Corporate Philosophy (Common to the Nisshinbo Group)

**Change and Challenge! For the creation of the future of Earth and People.**

## ■ NISD Vision 2025

**(Qualitative) Contribute to the development of a connected society through electronic devices and microwave products based on our strength in analog technology, and become a company with value and presence expected by customers around the world.**

**(Quantitative) Sales/Operating income = 100 billion yen/10 billion yen or more**

## ■ NISD's business domains

**Electronic Devices: Signal Processing & Energy Management**

**Microwave: Microwave Communications & Sensing**

## 2022 NISD Slogan

**Transformation through integration.**

**Pursuit of value provided to customers and creation of solution businesses.**

■ **Promotion of electronic device business with competitive advantage**

■ **Expansion of microwave business and profit generation**

■ **Integration and Strengthening of Structure for the Future**

# Business Category (Electronic Devices)

Electronic Devices	<b>SP(Signal Processing) :</b> Signal processing ICs, including operational amplifiers and sensor products for the growing market
	<b>EM(Energy Management) :</b> Power supply control system ICs, which are required for all kinds of devices and increasingly demanded for low power consumption.
	<b>CMS(Contracted Manufacturing Solution):</b> Consigned manufacturing products

## Product axis

### Electronic Devices Business

Field

SP (Signal Processing)

EM (Energy Management)

CMS  
(Contracted Manufacturing Solution)

Others

Major category

Sensor

Op/Com

Signal Conditioning

RF Device

Power Management

Battery Management

Power Peripheral

Foundry

Ass'y

Image Processing

Others

Medium category

MEMS, Opto

Op/Com

AFE, A/V, Motor, Peripheral

RF

LR, VD, Sw Reg, PMIC, Other

1cell, Multi cell

Driver, Power Device

Si, COT, GaAs, SAW

Ass'y Module

GJ, ID, LDD(OA), IP

Market axis	Consumer	Sensor	Op/Com (Consumer)	SC (Consumer)	RF Device	PM (Consumer)	BM (Consumer)	Power Peripheral	Foundry	Ass'y	Image Processing	Others
	Industrial machinery		Op/Com (Industrial Machinery)	SC (Industrial Machinery)		PM (Industrial Machinery)	BM (Industrial Machinery/ Healthcare)					
	Automotive		Op/Com (Automotive)	SC (Automotive)		PM (Automotive)						

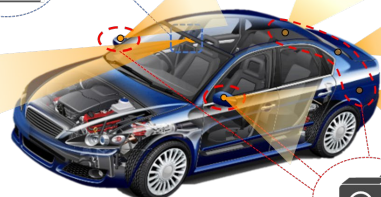
## RN5T5611 Completed



Mobility

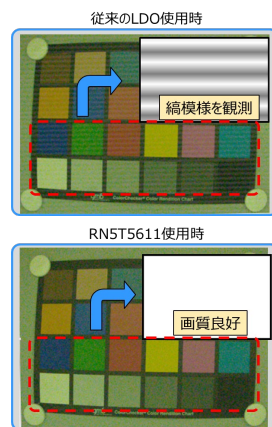
PMIC for functional safety-compatible CMOS image sensors

### For Functional Safety Supported Front Sensing Cameras



### For Functional Safety Camera Modules

Application installation example



### [Characteristics]

- NISD's first composite power supply for automotive sensing cameras compliant with ISO 26262 ASIL-D development process
- Equipped with DC/DC converter: 2 channels, ultra-low noise LDO: 1 channel, overvoltage/undervoltage monitoring circuit: 4 channels
- Equipped with thermal shutdown, soft start, I2C interface, logic BIST circuitry.
- Small-size packaging: QFN0505-32 (Wett Flank compatible)

## NJW4790 Completed



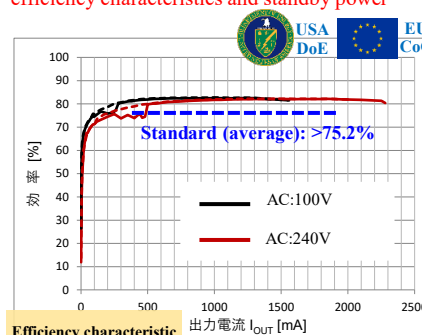
Infrastructure & Safety

Pseudo-resonant RCC soft switching control IC

### AC/DC power supply ICs compliant with energy conservation and EMC standards

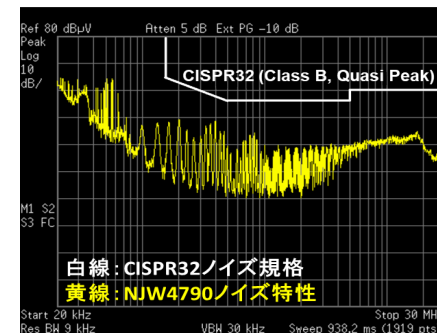
Meets energy-saving standards (DoE, CoC) for efficiency characteristics and standby power

Meets EMC standard (CISPR32) for multimedia equipment



Efficiency characteristic

Standby power Specification: <0.075 W	AC100V	AC240V
	0.02W	0.05W



### [Characteristics]

- Realizes low power consumption and high efficiency
- Contributing to reduction of standby power by light load mode
- Meets energy conservation standard (USA-DoE, EU-CoC)
- Meets low-EMI (CISPR32) by pseudo-resonance

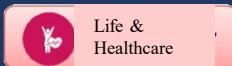
### [Application]

Auxiliary power supplies, smart meters, and AC adapters for industrial and residential equipment

# Electronic Devices Business SP Area Topics



## Completed NJL5830R

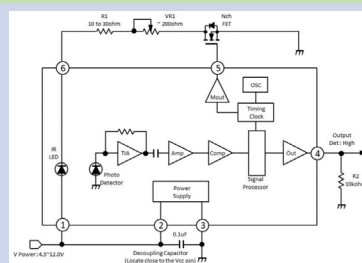


Optical reflective sensor with touchless buttons



Fusion of three technologies of NISD

- Optical semiconductor technology
- Analog Technology
- Assembly technology



### [Characteristics]

- Realized a small and thin package has been realized with a view to incorporating the product into button switches. (3.6 x 5.8 x 1.2 (mm))
- This product is the first in the industry to prevent malfunctions due to interference by shifting the pulse period between sensors.
- The optical modulation method provides high resistance to ambient light and allows for outdoor use.
- It can also be used in environments where gloves are worn, such as with food and beverage equipment and medical devices.

## Expansion of lineup for GNSS 1.2GHz band

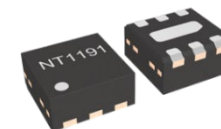
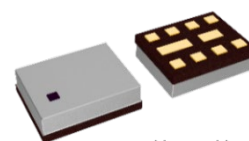
(NJG1186PJL: FEM/ NT1191: Wide-bandwidth LNA  
NT1192: 1.2GHz band LNA) developed



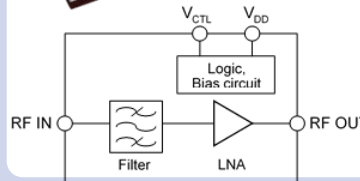
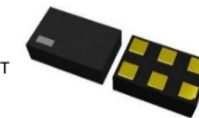
Improved GNSS positioning accuracy by one order of magnitude

NJG1186PJL

NT1191



NT1192

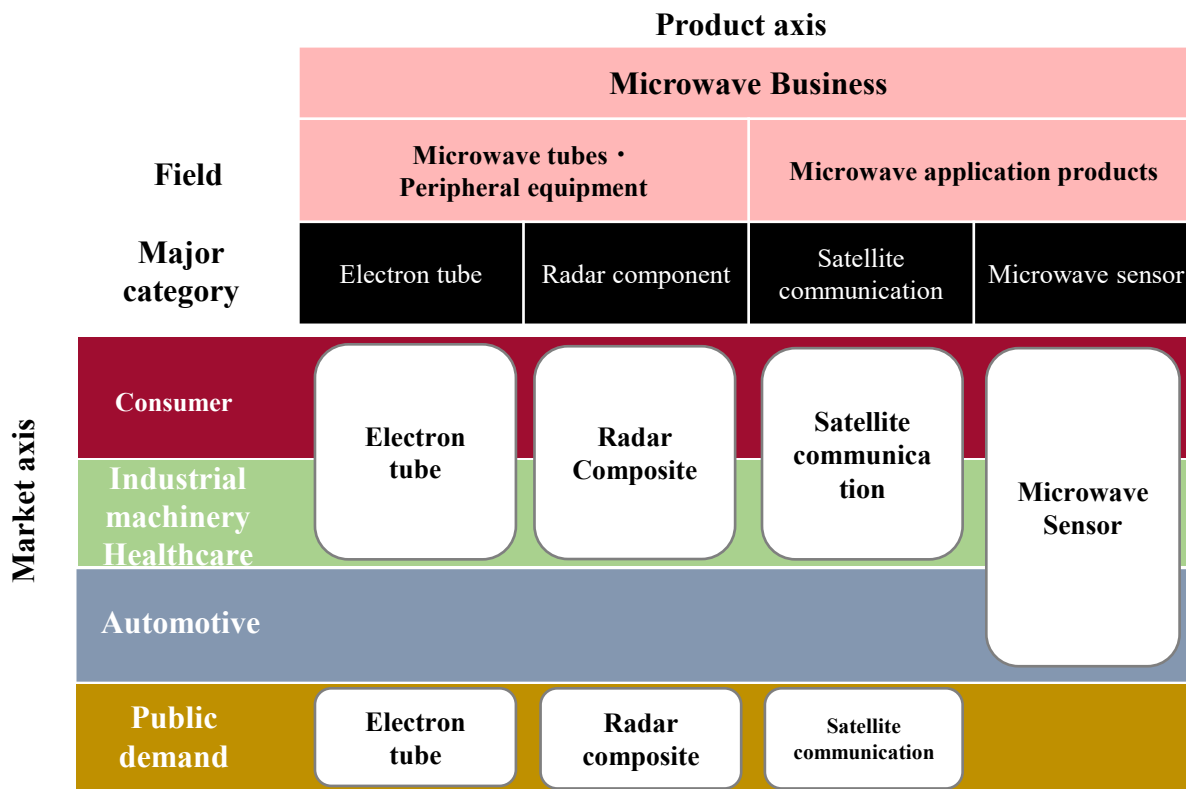


SAW: Surface acoustic wave filter  
LNA: Low Noise Amplifier  
FEM: Front-end module

Product Category	1.2GHz band (L2/L5/L6)	1.5GHz band (L1)	Characteristics
SAW+LNA FEM	<b>New product</b> NJG 1186 PJL	Existing product NJG1159	<b>Low noise, L5/L2 response</b>
Dedicated to Band "LNA"	<b>New product</b> NT1192	Existing product NJG1155, etc.	<b>Low external parts</b>
Common Band "LNA"	<b>New product NT1191</b>		<b>Low noise, Low external parts</b>

# Business Category (Microwave)

<b>Microwave</b>	<p><b>Microwave Tubes and Peripheral Equipment:</b> Electron Tubes and Other Products</p> <p><b>Microwave Applied Products:</b> Product Lineup Using Solid-State Microwave Technologies</p>
------------------	---

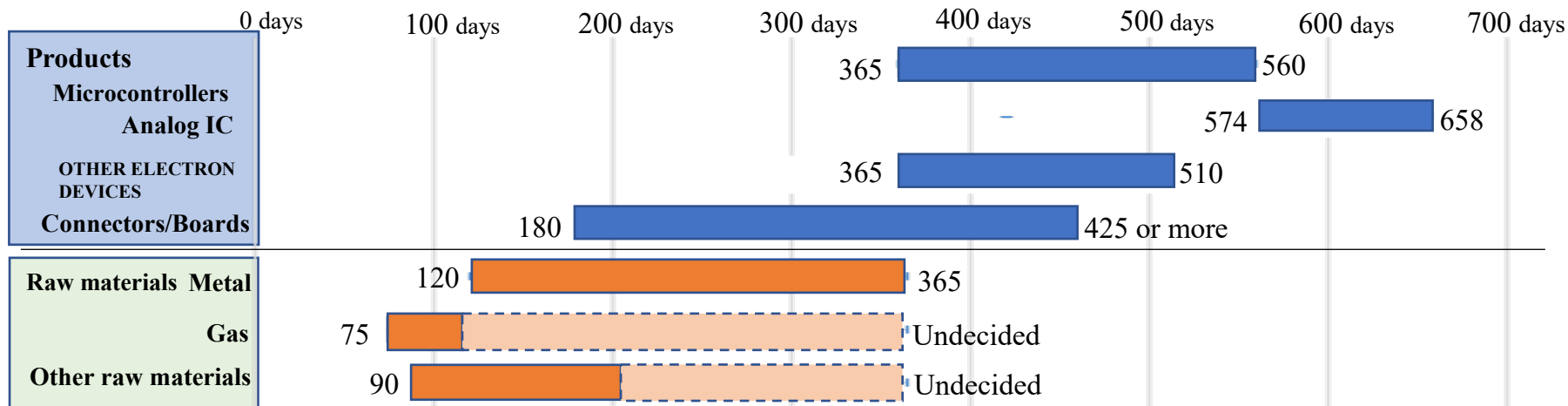


# Microwave Business Market/Market Conditions by Product **NISSHINBO**

Product category	Major category	Status of Orders Received and Business Negotiations
<b>Microwave tubes /Peripheral equipment</b>	Electron tube	<p>Sales of magnetrons for ship radar remained strong both in Japan and overseas due to an increase in ship transport volume and are expected to remain so in the second half of the year.</p> <p>Production cuts by radar manufacturers due to difficulty in obtaining parts and materials are a cause for concern.</p> <p>Sales increased due to increased adoption of electronic guns and catalysts for X-ray application equipment.</p> <p>The necessary trends of each company show continuous growth.</p>
	Radar Composite	<p>Stable due to combination sales with the above-mentioned Magnetron for ship radar.</p>
<b>Microwave Applied products</b>	Satellite communication	<p>Ship-equipped vessels performed well due to the IT adoption of vessels and the worldwide rise in operations.</p> <p>A certain amount of orders will be confirmed in the second half, and further additions are being negotiated.</p>
	Sensor	<p>Long-term comprehensive orders have been obtained due to demand for stable delivery and increased demand.</p> <p>Launched mass production of new products for TOTO in NISD-Thailand and responded to an increase in orders.</p>

# Procurement Status of Microwave Business

## Production materials and lead times



**Microcontrollers:** Lead time remains high. The maximum is 560 days for Company N.  
**Analog IC** : Lead time remains high. The maximum is 658 days for Company A.  
**Other Electronic Components:** Individual Electronic Components also remained at a high lead time. The maximum lead time is 510 days.  
**Connectors/boards:** Connectors manufactured by Company J will continue to be in the state of not responding to the delivery date.

**Metals:** Lead times remained high for cobal, nickel, tungsten, and molybdenum.  
**Gas:** Helium gas will be in time for this fiscal year, in light of savings in consumption.  
**Others:** We will closely monitor the status of the florinat supply stop due to the shutdown of the refining plant.



# Microwave Business Topics

## Increase in orders for microfocus electronic guns

For Canon Anelva (NJK1153)

Equipped with the microfocus X-ray source for industrial non-destructive inspection by Cannon Anelva. Realizes high resolution and high speed photography with stable output.

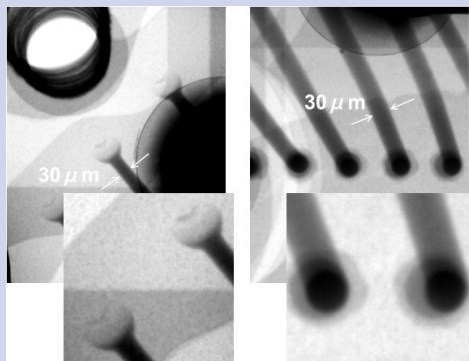


NJK1153



Canon Anelva's microfocus X-ray source  
With stable X-ray output for industrial non-destructive inspection  
Realizes high-resolution, high-speed photography

High-resolution X-ray image of bonding wire in IC package

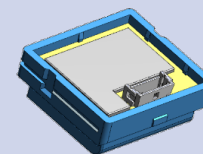


※ The contents of this report have been approved by Canon Anelva.

## 24 GHz Microwave Sensor-Module Commenced Mass Production

For TOTO Corporation (NJR4274)

Mass production of the NJR4274 microwave sensor module, newly developed for TOTO's new products, has started at Nissinbo Micro Devices (Thailand).



NJR4274

### TOTO news release (June 7)

New Neorest (NX/LS/AS/RS) launched simultaneously on Monday, August 1  
Expansion of the globally unified model, the "LS" is newly launched.  
Further evolution of the fusion of design and technology.  
Proposing a beautiful, high-quality restroom space.



※ The contents of this report have been approved by our TOTO.

## 4. Appendix

# 4-1. Financial results by segment ①

2021年度

無線・通信	21/12期	
	売上高	営業利益
マリンシステム	33,227	791
ソリューション・特機	71,254	5,557
ICT・メカトロニクス	23,726	128
医用機器	7,794	102
その他事業	4,613	788
モビリティ (JRCモビリティ)	17,494	610
消去・退職給付修正等	-3,024	-162
合計	155,084	7,814

当期

21/12期 2Q(組替後)		22/12期 2Q		前期組替後比	
売上高	営業利益	売上高	営業利益	売上高	営業利益
16,166	329	16,551	470	385	141
40,940	4,993	39,617	4,689	-1,323	-304
11,683	435	10,585	19	-1,098	-416
3,988	-39	3,408	194	-580	233
2,093	443	1,937	85	-156	-358
7,595	-44	6,776	-360	-819	-316
-1,267	-85	-1,389	-77	-122	8
81,200	6,034	77,487	5,021	-3,713	-1,013

2022年度

22/12期予想(2/9)		22/12期予想(8/10)	
売上高	営業利益	売上高	営業利益
36,000	1,200	36,000	1,200
76,000	5,000	76,000	5,000
25,000	700	25,000	700
9,000	500	9,000	500
4,000	500	4,000	500
18,000	300	18,000	300
-3,000	-200	-3,000	-200
165,000	8,000	165,000	8,000

マイクロデバイス

	21/12期	
	売上高	営業利益
日清紡マイクロデバイス (旧 新日本無線)	51,072	2,864
(旧 リコー電子デバイス)	28,014	1,698
消去・のれん償却費等	-1,713	-271
合計	77,373	4,291

21/12期 2Q(組替後)		22/12期 2Q		前期組替後比	
売上高	営業利益	売上高	営業利益	売上高	営業利益
24,514	2,002	41,687	4,691	17,173	2,689
13,231	381	-	-	-13,231	-381
-794	-143	-616	-109	178	34
36,951	2,240	41,071	4,582	4,119	2,341

22/12期予想(2/9)		22/12期予想(8/10)	
売上高	営業利益	売上高	営業利益
82,000	4,500	82,000	7,000
-	-	-	-
-	-	-	-
82,000	4,500	82,000	7,000

ブレーキ

	21/12期	
	売上高	営業利益
日清紡ブレーキ (国内・海外)	49,048	3,202
TMD	94,072	366
消去等	-4,825	-10
合計	138,295	3,558

21/12期 2Q(組替後)		22/12期 2Q		前期組替後比	
売上高	営業利益	売上高	営業利益	売上高	営業利益
24,910	2,249	26,775	1,182	1,865	-1,067
46,617	1,226	51,983	-3,160	5,366	-4,386
-2,317	31	-3,233	-187	-916	-218
69,210	3,506	75,525	-2,165	6,315	-5,672

22/12期予想(2/9)		22/12期予想(8/10)	
売上高	営業利益	売上高	営業利益
56,000	3,700	56,000	3,500
92,000	800	95,000	-1,000
-5,000	0	-5,000	0
143,000	4,500	146,000	2,500

# 4-2. Financial results by segment ②

精密機器	21/12期		当期				2022年度					
	売上高	営業利益	21/12期 2Q(組替後)		22/12期 2Q		前期組替後比		22/12期予想(2/9)		22/12期予想(8/10)	
			売上高	営業利益	売上高	営業利益	売上高	営業利益	売上高	営業利益	売上高	営業利益
精密部品	15,891	223	5,617	156	7,013	-51	1,396	-207	18,000	1,100	16,000	400
成形品	44,038	1,306	20,301	981	19,809	406	-492	-575	39,000	1,700	38,000	900
消去等	-4,161	-814	-1,720	-398	-2,365	-431	-645	-33	-4,000	-800	-4,000	-800
合計	55,768	715	24,198	739	24,457	-76	258	-816	53,000	2,000	50,000	500

化学品	21/12期		2022年度									
	売上高	営業利益	21/12期 2Q(組替後)		22/12期 2Q		前期組替後比		22/12期予想(2/9)		22/12期予想(8/10)	
			売上高	営業利益	売上高	営業利益	売上高	営業利益	売上高	営業利益	売上高	営業利益
環境・エネルギー関連製品(※)	9,601	1,697	4,629	775	5,217	920	588	145	10,500	1,800	10,500	1,800
カーボン他	1,730	358	762	149	1,000	243	238	94	2,100	600	2,100	600
消去等	-248	-1	-105	-1	-152	0	-47	1	-100	0	-100	0
合計	11,083	2,054	5,286	923	6,065	1,163	779	239	12,500	2,400	12,500	2,400

※燃料電池セパレータ、カルボジライト、断熱材

繊維	21/12期		2022年度									
	売上高	営業利益	21/12期 2Q(組替後)		22/12期 2Q		前期組替後比		22/12期予想(2/9)		22/12期予想(8/10)	
			売上高	営業利益	売上高	営業利益	売上高	営業利益	売上高	営業利益	売上高	営業利益
日本	27,651	-1,269	11,623	-585	13,432	-366	1,809	219	30,700	100	30,700	-200
海外	17,075	213	7,793	-16	10,950	152	3,157	168	19,200	500	19,200	500
消去等	-10,248	34	-4,445	60	-6,232	-93	-1,787	-153	-13,900	0	-13,900	0
合計	34,478	-1,022	14,971	-541	18,150	-307	3,179	234	36,000	600	36,000	300

# 4-3. Financial results by segment ③

不動産	21/12期		当期						2022年度			
	売上高	営業利益	21/12期 2Q(組替後)		22/12期 2Q		前期組替後比		22/12期予想(2/9)		22/12期予想(8/10)	
			売上高	営業利益	売上高	営業利益	売上高	営業利益	売上高	営業利益	売上高	営業利益
合計	15,584	9,388	12,566	7,966	8,721	7,277	-3,844	-688	10,500	7,500	10,500	8,000

その他・全社費用等	21/12期		当期						2022年度			
	売上高	営業利益	21/12期 2Q(組替後)		22/12期 2Q		前期組替後比		22/12期予想(2/9)		22/12期予想(8/10)	
			売上高	営業利益	売上高	営業利益	売上高	営業利益	売上高	営業利益	売上高	営業利益
その他事業	22,974	133	4,423	135	5,384	246	961	111	11,000	-500	11,000	300
全社費用	-	-5,144	-	-2,539	-	-2,778	0	-239	-	-6,000	-	-6,000
合計	22,974	-5,011	4,423	-2,404	5,384	-2,531	961	-126	11,000	-6,500	11,000	-5,700

全社合計	21/12期		当期						2022年度			
	売上高	営業利益	21/12期 2Q(組替後)		22/12期 2Q		前期組替後比		22/12期予想(2/9)		22/12期予想(8/10)	
			売上高	営業利益	売上高	営業利益	売上高	営業利益	売上高	営業利益	売上高	営業利益
合計	510,643	21,788	248,808	18,464	256,865	12,962	8,056	-5,501	513,000	23,000	513,000	23,000

NISH: Nisshinbo Holdings Inc.

Consolidated subsidiaries of NISH.

JRC: Japan Radio Co., Ltd.

NISD: Nisshinbo Micro Devices Inc.

NISB: Nisshinbo Brake Inc.

NISM: Nisshinbo Mechatronics Inc.

NISC: Nisshinbo Chemical Inc.

NIST: Nisshinbo Textile Inc.

**This document contains forecasts of performance and other projections based on information currently available and certain assumptions judged by Nisshinbo to be reasonable. Actual performance may materially differ from these projections as a result of changes in the economic environment and other risks and uncertainties.**