

NISSHINBO HISTORY

- 1907 Nisshin Cotton Spinning Co., Ltd. established.
- 1908 The former Kameido Head Office Plant began operations.
- 1920 Office opened in Nihonbashi, and thereafter became the head office of Nisshin Cotton Spinning. Nisshin Cotton Spinning merged with Okazaki Boseki Co., Ltd. (the present Harisaki Plant).
- 1921 Nagoya Plant began operations (completely burnt down in 1945 due to the war, restored in 1951).
- 1924 Nisshin Cotton Spinning merged with Tokyo Boseki Co., Ltd. (the present Tokyo Plant).
- 1925 Branch office opened in Nagoya (the present Nagoya Branch).
Branch office opened in Osaka (the present Osaka Branch).
- 1926 Hamamatsu Plant began operations.
- 1933 Toyama Plant began operations.
- 1937 Nisshin Cotton Spinning acquired Kawagoe Boseki Co., Ltd. (the present Kawagoe Plant).
- 1938 Nisshin Cotton Spinning merged with Nisshin Rayon Co., Ltd. (the present Miai Plant).
- 1940 Toa Jitsugyo Co., Ltd. established (the company name changed to Nissin Toa Inc. in 1990).
- 1945 Nisshin Cotton Spinning acquired the Meiji Plant of Nanshin Seiki Co., Ltd. (the present Fuji Plant).
- 1947 Non-textiles Division set up and thereafter expanded operations to include automobile brakes, chemical products, papers, and machine tools.
- 1949 Nihon Postal Franker Co., Ltd. established.
Nisshin Cotton Spinning listed on the Tokyo Stock Exchange.
Nitto Asbestos Co., Ltd. established (the company name changed to Nisshinbo Brake Sales Co., Ltd. in 1987).
- 1950 Ueda Japan Radio Co., Ltd. established.
- 1952 Shimada Plant began operations.
- 1958 Tokushima Plant began operations.
Nippon Kohbunshikan Co., Ltd. established (the company name changed to Nippon Kohbunshi Co., Ltd. in 1986).
- 1961 Nisshin Cotton Spinning listed on the first section of the Tokyo Stock Exchange.
- 1962 Nisshin Cotton Spinning's English company name changed to Nisshin Spinning Co., Ltd.
- 1966 Fujieda Plant began operations.
- 1972 Nisshinbo do Brasil Industria Textil Ltda. (Brazil) established.
- 1978 Nisshin Spinning acquired Tokai Seishi Kougyou Co., Ltd.
- 1981 Tatebayashi Chemical Plant (the present Tatebayashi Plant) began operations.
- 1984 Nisshin Spinning's English company name changed to Nisshinbo Industries, Inc.



- 1985 Nisshinbo Industries acquired Nisshin Denim Inc.
- 1986 The Machine Tools Department of the Miai Plant spun off to create the Miai Mechatronics Plant.
Anti-skid Brake System (now ABS) Division set up.
- 1987 Hamakita Plant began operations.
- 1989 Kohbunshi (Thailand) Ltd. established.
- 1992 Chiba Plant began operations.
The head office relocated to its present location in Ningyo-cho, Nihonbashi, Chuo-ku, Tokyo.
- 1993 Pudong Kohbunshi (Shanghai) Co., Ltd. (China) established.
- 1995 Nisshinbo Automotive Corporation (U.S.A.) established.
Nisshinbo Urban Development Co., Ltd. established.
- 1996 Nisshinbo Somboon Automotive Co., Ltd. (Thailand) established.
- 1997 Nisshinbo Automotive Manufacturing Inc. (U.S.A.) established through complete financing from the subsidiary Nisshinbo Automotive Corporation.
P.T. Gistex Nisshinbo Indonesia established as a joint venture.
- 1998 Saeron Automotive Corporation (South Korea) established.
Research & Development Center established.
- 2000 P.T. Nikawa Textile Industry (Indonesia) established as a subsidiary through the additional acquisition of stocks.
Continental Teves Corporation established as a joint venture.



- 2001 Ningbo Sunrise Textile Dyeing and Finishing Co., Ltd. (China) established as a joint venture.
- 2002 Ningbo Veken Textile Co., Ltd. (China) established as a joint venture.
Nisshinbo Industries acquired all shares of Iwao & Co., Ltd.
Nisshinbo (Shanghai) Co., Ltd. (China) began operations.



NISSHINBO GROUP

The Nisshinbo Group consists of Nisshinbo Industries, Inc., its 38 subsidiaries, and 9 affiliates.

Main Group Companies (As of March 31, 2003)

Consolidated Subsidiaries

Company	Location	Capital	Business
Nisshin Toa Inc.	Tokyo, Japan	¥450 million	Textiles, Food Ingredients, Papers
Ebisu Syokuhu Co., Ltd.	Shizuoka, Japan	¥50 million	Textiles
Nisshinbo Mobix Co., Ltd.	Wakayama, Japan	¥80 million	Textiles
Nisshinbo Yarn Dyed Co., Ltd.	Nagoya, Japan	¥80 million	Textiles
Nisshin Denim Inc.	Tokushima, Japan	¥200 million	Textiles
Nisshin Tex Co., Ltd.	Osaka, Japan	¥10 million	Textiles
Nisshinbo do Brasil Industria Textil Ltda.	Brazil	R\$20.075 million	Textiles
P.T. Gistex Nisshinbo Indonesia	Indonesia	US\$10 million	Textiles
P.T. Nikawa Textile Industry	Indonesia	US\$75 million	Textiles
Nisshinbo Brake Sales Co., Ltd.	Tokyo, Japan	¥150 million	Automobile Brakes
Nisshinbo Techno Vehicle Inc.	Yokohama, Japan	¥50 million	Automobile Brakes
Nisshinbo Automotive Corporation	U.S.A.	US\$88 million	Automobile Brakes
Nisshinbo Automotive Manufacturing Inc.	U.S.A.	US\$15.44 million	Automobile Brakes
Nisshinbo Somboon Automotive Co., Ltd.	Thailand	BAHT732.6 million	Automobile Brakes
Saeron Automotive Corporation	South Korea	WON8,160 million	Automobile Brakes
Tokai Seishi Kougyou Co., Ltd.	Shizuoka, Japan	¥300 million	Papers
Nihon Postal Franker Co., Ltd.	Tokyo, Japan	¥310 million	Papers, Chemical Products
Nisshinbo Urban Development Co., Ltd.	Tokyo, Japan	¥480 million	Real Estate Leasing
Kansai Nisshinbo Urban Development Co., Ltd.	Osaka, Japan	¥30 million	Real Estate Leasing
Nisshinbo Europe B.V.	The Netherlands	EUR2.165 million	Real Estate Leasing
Ueda Japan Radio Co., Ltd.	Nagano, Japan	¥700 million	Electronics
Nippon Kohbunshi Co., Ltd.	Tokyo, Japan	¥310 million	Plastic Molded Products
Nisshinbo Kikai Hanbai Co., Ltd.	Tokyo, Japan	¥30 million	Machine Tools
Nisshinbo Engineering Co., Ltd.	Tokyo, Japan	¥10 million	Chemical Products
Kohbunshi (Thailand) Ltd.	Thailand	BAHT100 million	Plastic Molded Products
Pudong Kohbunshi (Shanghai) Co., Ltd.	China	US\$7 million	Plastic Molded Products
Iwao & Co., Ltd.	Osaka, Japan	¥250 million	Textiles, Chemical Products, Real Estate Leasing

Subsidiary and Affiliates Accounted for by the Equity Method

Company	Location	Capital	Business
Naigai Shirts Co., Ltd.	Osaka, Japan	¥90 million	Textiles
Continental Teves Corporation	Tokyo, Japan	¥1,390 million	Automobile Brakes

BOARD OF DIRECTORS AND STATUTORY AUDITORS

President
Yoshikazu Sashida

Senior Executive Director
Kohshi Fujino
Senior Executive Director
Tadashi Nakai

Executive Director
Takashi Iwashita

Executive Director
Kunihiro Toda

Executive Director
Yasuo Takeuchi

Executive Director
Masao Kinoshita

Executive Director
Hajime Takagiwa

Director
Hideyuki Tanaka

Director
Takeo Shimura

Director
Shizuka Uzawa

Director
Masashi Shinagawa

Director
Yoshihito Onda

Director
Hideo Yakuden

Director
Kinjiro Kawashima

Director
Seiichiro Tomizawa

Standing Statutory Auditor
Kenji Tasaki

Statutory Auditor
Shoichi Hayashi

Statutory Auditor
Tomofumi Akiyama

Statutory Auditor
Yoshikuni Utsunomiya

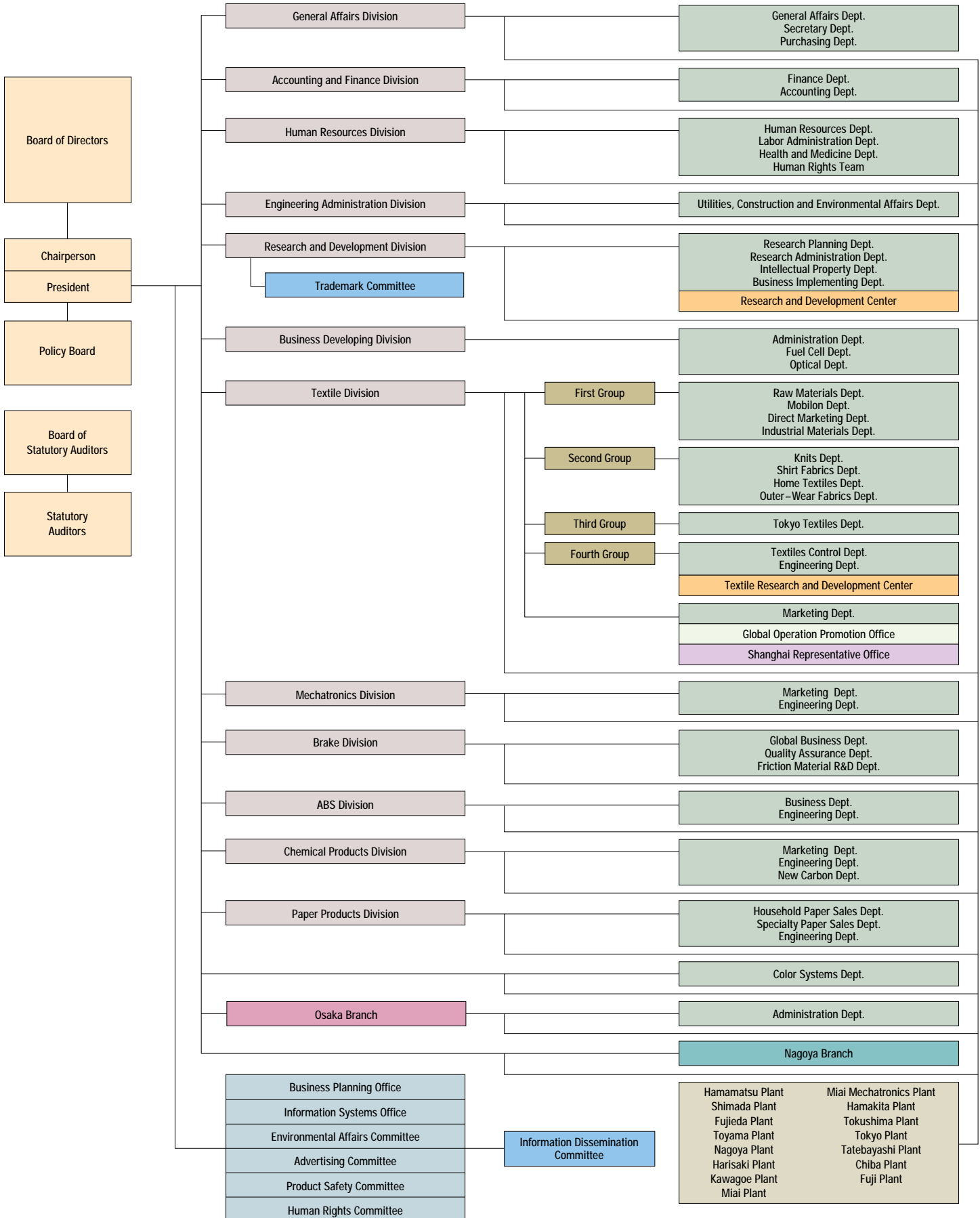
Statutory Auditor
Takehiko Urushihara

CORPORATE DATA

(As of March 31, 2003)

Founded:	February 5, 1907
Head Office:	2-31-11, Ningyo-cho, Nihonbashi, Chuo-ku, Tokyo 103-8650, Japan Tel: 03-5695-8833 Fax: 03-5695-8970 URL: http://www.nisshinbo.co.jp/
Osaka Branch:	2-4-2, Kitakyuhoji-machi, Chuo-ku, Osaka 541-0057, Japan Tel: 06-6267-5501 Fax: 06-6267-5679
Nagoya Branch:	5-2-38, Sakae, Naka-ku, Nagoya 460-0008, Japan Tel: 052-261-6151 Fax: 052-263-9480
Employees:	Parent Company 3,525 Subsidiaries 5,102 Total 8,627
Common Stock:	
Authorized:	380,137,000 shares
Issued:	216,580,939 shares ¥27,588 million — US\$230 million
Shareholders:	13,541
Listings:	Tokyo, Osaka, Nagoya, Fukuoka and Sapporo
Transfer Agent:	UFJ Trust Bank Limited 1-4-3, Marunouchi, Chiyoda-ku, Tokyo 100-0005, Japan

ORGANIZATION CHART





2-31-11, Ningyo-cho, Nihonbashi, Chuo-ku, Tokyo 103-8650, Japan

Tel: 03-5695-8833 / Fax: 03-5695-8970

URL: <http://www.nisshinbo.co.jp/>